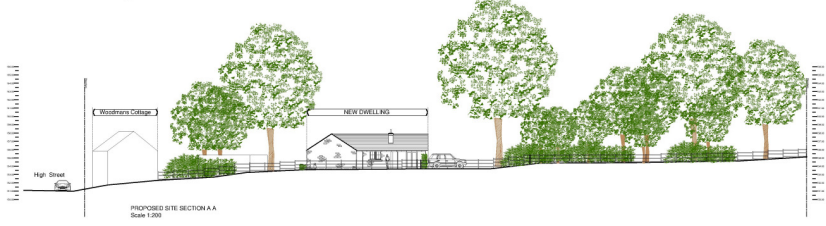
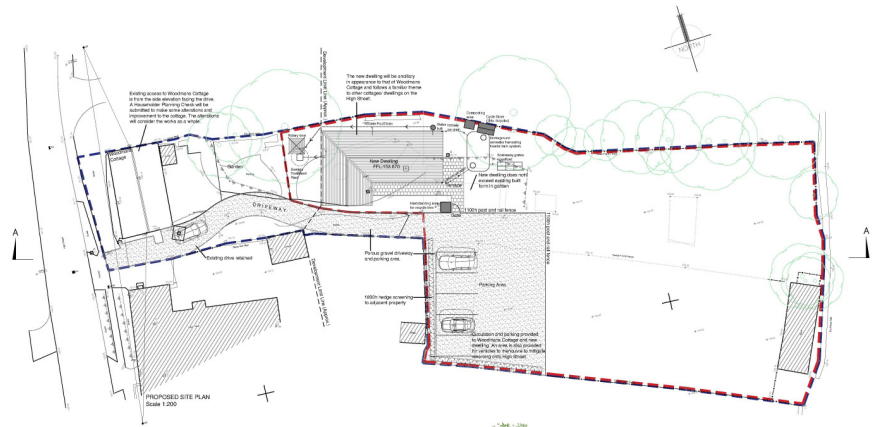
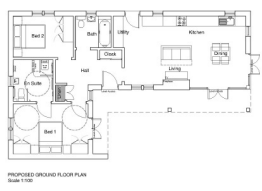


- Notes
1. See site plan.
 2. All dimensions are in metres unless stated otherwise.
 3. See the information sheet on the side sheet.
 4. All measurements are taken from the centre of the road.
 5. All measurements are taken from the centre of the road.
 6. All measurements are taken from the centre of the road.



THIS COPY HAS BEEN MADE BY OR WITH THE AUTHORITY OF PROSPECT PROPERTY CONSULTANTS PURSUANT TO THE TERMS OF THE COPYRIGHT LICENSE AND PROSPECT PROPERTY CONSULTANTS ACCEPTS NO LIABILITY FOR ANY LOSS OR DAMAGE TO THE COPY OR ORIGINAL DOCUMENTS WITHOUT THE PRIOR PERMISSION OF THE COPYRIGHT OWNER.



REV	DATE	DESCRIPTION	OWN/CHKD
PROJECT			
MRS & MRS STANDEN			
WOODMANS COTTAGE			
HIGH STREET			
CROFTON			
PICKERING			
YO18 9HL			
TITLE			
PROPOSED FLOOR PLAN ELEVATIONS,			
SITE SECTION AND SITE PLAN			
DRAWN BY			
PLANNING			
DATE	SCALE	REV	
11.06.15	1:200	01	
	1:200	02	
	1:200	03	
	1:200	04	
	1:200	05	
	1:200	06	
	1:200	07	
	1:200	08	
	1:200	09	
	1:200	10	
	1:200	11	
	1:200	12	
	1:200	13	
	1:200	14	
	1:200	15	
	1:200	16	
	1:200	17	
	1:200	18	
	1:200	19	
	1:200	20	
	1:200	21	
	1:200	22	
	1:200	23	
	1:200	24	
	1:200	25	
	1:200	26	
	1:200	27	
	1:200	28	
	1:200	29	
	1:200	30	
	1:200	31	
	1:200	32	
	1:200	33	
	1:200	34	
	1:200	35	
	1:200	36	
	1:200	37	
	1:200	38	
	1:200	39	
	1:200	40	
	1:200	41	
	1:200	42	
	1:200	43	
	1:200	44	
	1:200	45	
	1:200	46	
	1:200	47	
	1:200	48	
	1:200	49	
	1:200	50	
	1:200	51	
	1:200	52	
	1:200	53	
	1:200	54	
	1:200	55	
	1:200	56	
	1:200	57	
	1:200	58	
	1:200	59	
	1:200	60	
	1:200	61	
	1:200	62	
	1:200	63	
	1:200	64	
	1:200	65	
	1:200	66	
	1:200	67	
	1:200	68	
	1:200	69	
	1:200	70	
	1:200	71	
	1:200	72	
	1:200	73	
	1:200	74	
	1:200	75	
	1:200	76	
	1:200	77	
	1:200	78	
	1:200	79	
	1:200	80	
	1:200	81	
	1:200	82	
	1:200	83	
	1:200	84	
	1:200	85	
	1:200	86	
	1:200	87	
	1:200	88	
	1:200	89	
	1:200	90	
	1:200	91	
	1:200	92	
	1:200	93	
	1:200	94	
	1:200	95	
	1:200	96	
	1:200	97	
	1:200	98	
	1:200	99	
	1:200	100	

DATE VALID
11.06.15